



TRANSPORTATION CABINET

Frankfort, Kentucky 40622
www.transportation.ky.gov/

Steven L. Beshear
Governor

Michael W. Hancock, P.E.
Secretary

December 10, 2012

CALL NO. 302
CONTRACT ID NO. 121378
ADDENDUM # 2

Subject: Jefferson County, FD04 SPP 056 031E 004-005
Letting December 14, 2012

- (1) Revised - Plan Sheets - R2f, R2g, R8, & R9b
- (2) Revised - Bid Items - Pages 80-83 of 83

Proposal revisions are available at <http://transportation.ky.gov/Construction-Procurement/>.

Plan revisions are available at <http://www.lynnimaging.com/kytransportation/>.

If you have any questions, please contact us at 502-564-3500.

Sincerely,

A handwritten signature in blue ink that reads "Ryan Griffith".

Ryan Griffith
Director
Division of Construction Procurement

RG:ks
Enclosures



An Equal Opportunity Employer M/F/D

GENERAL SUMMARY

COUNTY OF	ITEM NO.	SHEET NO.
JEFFERSON	5-264.10	R2f

ITEM	DESCRIPTION	UNIT	US 31E	RAMP 2	RAMP 3	PROJECT TOTAL
0078	CRUSHED AGGREGATE NO. 2 ⑦	TON	2			2
1984	DELINEATOR FOR BARRIER - WHITE (TEMPORARY)	EACH	45			45
1985	DELINEATOR FOR BARRIER - YELLOW (TEMPORARY)	EACH	45			45
2003	RELOCATE TEMPORARY CONCRETE BARRIER	LIN FT	1940			1940
2014	BARRICADE-TYPE III	EACH	4			4
2091	REMOVE PAVEMENT ⑩	SQ YD	2365			2365
2200	ROADWAY EXCAVATION	CU YD	5962	156	1314	7432
2262	FENCE-WOVEN WIRE TYPE I	LIN FT	571			571
2351	GUARDRAIL-STEEL W BEAM-S FACE	LIN FT	175			175
2360	GUARDRAIL TERMINAL SECTION NO. 1	EACH	4			4
2381	REMOVE GUARDRAIL ⑥	LIN FT	470			470
2367	GUARDRAIL END TREATMENT TYPE I	EACH	2			2
2545	CLEARING AND GRUBBING ⑤	LP SUM	1			1
2562	SIGNS ④	SO FT	270			270
2569	DEMOBILIZATION	LP SUM	1			1
2599	FABRIC - GEOTEXTILE TYPE IV	SQ YD	10048	235	134	10417
2600	FABRIC - GEOTEXTILE TYPE IV FOR PIPE	SQ YD	1036			1036
2650	MAINTAIN AND CONTROL TRAFFIC	LP SUM	1			1
2671	PORTABLE CHANGEABLE MESSAGE SIGN	EACH	3			3
1984	DELINEATOR FOR BARRIER - WHITE	EACH	60			60
1985	DELINEATOR FOR BARRIER - YELLOW	EACH	60			60
2159	TEMPORARY DITCH	LIN FT	800			800
2429	RIGHT-OF-WAY MONUMENT TYPE I	EACH	5			5
2432	WITNESS POST	EACH	5			5
2695	RUMBLE STRIPS TYPE 3	LIN FT	462			462
2701	TEMPORARY SILT FENCE	LIN FT	3130			3130
2704	SILT TRAP TYPE B	EACH	10			10
2705	SILT TRAP TYPE C	EACH	3			3
2707	CLEAN SILT TRAP TYPE B	EACH	30			30
2708	CLEAN SILT TRAP TYPE C	EACH	9			9
2709	CLEAN TEMPORARY SILT FENCE	LIN FT	9390			9390
2726	STAKING	LP SUM	1			1
2775	ARROW PANEL	EACH	2			2
2898	RELOCATE CRASH CUSHION	EACH	3			3
2900	INSTALL TEMP CRASH CUSHION	EACH	2			2
2998	MASONRY COATING	SQ YD	783			783
3171	CONCRETE BARRIER WALL TYPE 9T	LIN FT	1120			1120
5950	EROSION CONTROL BLANKET	SQ YD	558			558
5952	TEMPORARY MULCH	SQ YD	3889			3889
5953	TEMP SEEDING AND PROTECTION	SQ YD	15990			15990
5966	TOPDRESSING FERTILIZER	TON	0.20			0.20
5985	SEEDING AND PROTECTION	SQ YD	9400			9400
5990	SODDING	SQ YD	2810			2810

ITEM	DESCRIPTION	UNIT	US 31E	RAMP 2	RAMP 3	PROJECT TOTAL
6510	PAVE STRIPING-TEMP PAINT-4 IN	LIN FT	10880			10880
6511	PAVE STRIPING-TEMP PAINT-6 IN	LIN FT	2760			2760
6514	PAVE STRIPING-PERM PAINT-4 IN	LIN FT	3180			3180
6515	PAVE STRIPING-PERM PAINT-6 IN	LIN FT	2608			2608
6516	PAVE STRIPING-PERM PAINT-8 IN	LIN FT	444			444
6517	PAVE STRIPING-PERM PAINT-12 IN	LIN FT	1130			1130
6568	PAVE MARKING-THERMO STOP BAR-24 IN	LIN FT	24			24
6589	PAVEMENT MARKER TYPE V-MW	EACH	19			19
6592	PAVEMENT MARKER TYPE V-B W/R	EACH	60			60
6593	PAVEMENT MARKER TYPE V-B Y/R	EACH	34			34
8904	CRASH CUSHION TYPE VI CLASS C (TL3)	EACH	1			1
10020NS	FUEL ADJUSTMENT	DOLLAR	3910			3910
2313IER70I	PIPELINE VIDEO INSPECTION	LIN FT	316			316
23274ENIIF	TURF REINFORCEMENT MAT 1	SQ YD	728			728
23335EC	CONCRETE MEDIAN BARRIER TY 9B (PERMANENT)	LIN FT	1108			1108
8540	JOINT SEALING ⑨	LIN FT	3195	101		3296

NOTES

ALL ASHALT MIXTURES SHALL BE ESTIMATED AT 110 LBS. PER SQ. YD. PER INCH OF DEPTH, UNLESS NOTED OTHERWISE.

- ① ESTIMATED AT 115 LBS. PER SQ. YD. PER INCH OF DEPTH.
- ② ESTIMATED AT 100 LBS. PER SQ. YD. PER INCH OF DEPTH.
- ③ ESTIMATED AT 95 LBS. PER SQ. YD. PER INCH OF DEPTH.

④ Additional Quantities have been added than what is shown on the traffic control sheet. Signs may be added or removed by the Engineer.

⑤ APPROXIMATELY 3 ACRES.

⑥ DISMANTLE, SALVAGE, AND STOCKPILE AT THE HIGHWAY DEPT. MIDDLETOWN OFFICE AS DIRECTED BY THE ENGINEER. SALVAGED ITEMS SHALL BECOME THE PROPERTY OF THE DEPARTMENT OF HIGHWAYS.

⑦ USED FOR PERFORATED PIPE HEADWALL

⑧ INCLUDES 10% ADDITIONAL MATERIAL IN THE BOTTOM 4" OF THE PAVEMENT DESIGN AS A CONSTRUCTION TOLERANCE ON ROCK SUBGRADE.

⑨ Hot poured sealant is required.

⑩ INCLUDES 653 SQ YD REMOVAL OF EXISTING CONCRETE ENTRANCES

Earthwork Quantities

Com = 5448 cy
 Emb* = 537 cy
 Rock Cut = 1984 cy
 Rock Roadbed = 1960 cy

*Embankment shown for information only

Note: Item 2200 includes approximately 1984 cy of rock cut.

SCALE: 1"=

GENERAL SUMMARY SHEET

FILE NAME: G:\PWORK\PATRICK.MATHENY\0387904.VR020F\SU_MUL.DGN

USER: Patrick Matheny
DATE PLOTTED: December 7, 2012

E-SHEET NAME:

MicroStation v8.11.7.443

GENERAL SUMMARY

△
REVISED 12-7-12

ITEM	DESCRIPTION	UNIT	US 31E	RAMP 2	RAMP 3	PROJECT TOTAL
0078	CRUSHED AGGREGATE NO. 2 ⑦	TON	2			2
1984	DELINEATOR FOR BARRIER - WHITE (TEMPORARY)	EACH	45			45
1985	DELINEATOR FOR BARRIER - YELLOW (TEMPORARY)	EACH	45			45
2003	RELOCATE TEMPORARY CONCRETE BARRIER	LIN FT	1940			1940
2014	BARRICADE-TYPE III	EACH	4			4
2091	REMOVE PAVEMENT ⑩	SQ YD	2365			2365
2200	ROADWAY EXCAVATION	CU YD	5962	156	1314	7432
2262	FENCE-WOVEN WIRE TYPE I	LIN FT	571			571
2351	GUARDRAIL-STEEL W BEAM-S FACE	LIN FT	175			175
2360	GUARDRAIL TERMINAL SECTION NO. 1	EACH	4			4
2381	REMOVE GUARDRAIL ⑥	LIN FT	470			470
2367	GUARDRAIL END TREATMENT TYPE I	EACH	2			2
2545	CLEARING AND GRUBBING ⑤	LP SUM	1			1
2562	SIGNS ④	SO FT	270			270
2569	DEMOBILIZATION	LP SUM	1			1
2599	FABRIC - GEOTEXTILE TYPE IV	SO YD	10048	235	134	10417
2600	FABRIC - GEOTEXTILE TYPE IV FOR PIPE	SO YD	1036			1036
2650	MAINTAIN AND CONTROL TRAFFIC	LP SUM	1			1
2671	PORTABLE CHANGEABLE MESSAGE SIGN	EACH	3			3
1984	DELINEATOR FOR BARRIER - WHITE	EACH	60			60
1985	DELINEATOR FOR BARRIER - YELLOW	EACH	60			60
2159	TEMPORARY DITCH	LIN FT	800			800
2429	RIGHT-OF-WAY MONUMENT TYPE 1	EACH	5			5
2432	WITNESS POST	EACH	5			5
2695	RUMBLE STRIPS TYPE 3	LIN FT	462			462
2701	TEMPORARY SILT FENCE	LIN FT	3130			3130
2704	SILT TRAP TYPE B	EACH	10			10
2705	SILT TRAP TYPE C	EACH	3			3
2707	CLEAN SILT TRAP TYPE B	EACH	30			30
2708	CLEAN SILT TRAP TYPE C	EACH	9			9
2709	CLEAN TEMPORARY SILT FENCE	LIN FT	9390			9390
2726	STAKING	LP SUM	1			1
2775	ARROW PANEL	EACH	2			2
2898	RELOCATE CRASH CUSHION	EACH	3			3
2900	INSTALL TEMP CRASH CUSHION	EACH	2			2
2998	MASONRY COATING	SO YD	783			783
3171	CONCRETE BARRIER WALL TYPE 9T	LIN FT	1120			1120
5950	EROSION CONTROL BLANKET	SO YD	558			558
5952	TEMPORARY MULCH	SO YD	3889			3889
5953	TEMP SEEDING AND PROTECTION	SO YD	15990			15990
5966	TOPDRESSING FERTILIZER	TON	0.20			0.20
5985	SEEDING AND PROTECTION	SO YD	9400			9400
5990	SODDING	SO YD	2810			2810

ITEM	DESCRIPTION	UNIT	US 31E	RAMP 2	RAMP 3	PROJECT TOTAL
6510	PAVE STRIPING-TEMP PAINT-4 IN	LIN FT	10880			10880
6511	PAVE STRIPING-TEMP PAINT-6 IN	LIN FT	2760			2760
6514	PAVE STRIPING-PERM PAINT-4 IN	LIN FT	3180			3180
6515	PAVE STRIPING-PERM PAINT-6 IN	LIN FT	2608			2608
6516	PAVE STRIPING-PERM PAINT-8 IN	LIN FT	444			444
6517	PAVE STRIPING-PERM PAINT-12 IN	LIN FT	1130			1130
6568	PAVE MARKING-THERMO STOP BAR-24 IN	LIN FT	24			24
6589	PAVEMENT MARKER TYPE V-MW	EACH	19			19
6592	PAVEMENT MARKER TYPE V-B W/R	EACH	60			60
6593	PAVEMENT MARKER TYPE V-B Y/R	EACH	34			34
8904	CRASH CUSHION TYPE VI CLASS C (TL3) △	EACH	1			1
10020NS	FUEL ADJUSTMENT	DOLLAR	3910			3910
2313IER70I	PIPELINE VIDEO INSPECTION	LIN FT	316			316
23274ENIIF	TURF REINFORCEMENT MAT 1	SO YD	728			728
23335EC	CONCRETE MEDIAN BARRIER TY 9B (PERMANENT)	LIN FT	1108			1108
8540	JOINT SEALING ⑨	LIN FT	3195	101		3296

FILE NAME: G:\PWORK\PATRICK.MATHENY\0387904.VR020205\SU_MUL.DGN

USER: Patrick Matheny
DATE PLOTTED: December 7, 2012

E-SHEET NAME:

MicroStation v8.11.7.443

Earthwork Quantities

Com = 5448 cy
Emb* = 537 cy
Rock Cut = 1984 cy
Rock Roadbed = 1960 cy

*Embankment shown for information only

△ Note: Item 2200 includes approximately 1984 cy of rock cut.

NOTES

ALL ASHALT MIXTURES SHALL BE ESTIMATED AT 110 LBS. PER SQ. YD. PER INCH OF DEPTH, UNLESS NOTED OTHERWISE.

- ① ESTIMATED AT 115 LBS. PER SQ. YD. PER INCH OF DEPTH.
- ② ESTIMATED AT 100 LBS. PRE SQ. YD. PER INCH OF DEPTH.
- ③ ESTIMATED AT 95 LBS. PER SQ. YD. PER INCH OF DEPTH.

- ④ Additional Quantities have been added than what is shown on the traffic control sheet. Signs may be added or removed by the Engineer.
- ⑤ APPROXIMATELY 3 ACRES.
- ⑥ DISMANTLE, SALVAGE, AND STOCKPILE AT THE HIGHWAY DEPT. MIDDLETOWN OFFICE AS DIRECTED BY THE ENGINEER. SALVAGED ITEMS SHALL BECOME THE PROPERTY OF THE DEPARTMENT OF HIGHWAYS.
- ⑦ USED FOR PERFORATED PIPE HEADWALL
- ⑧ INCLUDES 10% ADDITIONAL MATERIAL IN THE BOTTOM 4" OF THE PAVEMENT DESIGN AS A CONSTRUCTION TOLERANCE ON ROCK SUBGRADE.
- ⑨ Hot poured sealant is required.

⑩ INCLUDES 653 SQ YD REMOVAL OF EXISTING CONCRETE ENTRANCES

SCALE: 1"=

GENERAL SUMMARY SHEET

PAVING AREAS

ITEM	MAINLINE	RAMP 2	RAMP 3	WINGFIELD LANE	ENTRANCES	TOTAL PROJECT				
	S	Q	U	A	R	E	Y	A	R	D
JPC PAVEMENT - 10 INCH	9314	213	100	—	290	9917				
4" DENSE GRADED AGGREGATE BASE	—	—	—	—	548	548				
6" DENSE GRADED AGGREGATE BASE	9314	213	100	—	290	9917				
FULL DEPTH DGA BASE (ESTIMATED @ 12" DEPTH)	474	—	—	—	—	474				
FULL DEPTH DGA BASE (ESTIMATED @ 16" DEPTH)	1215	58	69	—	—	1342				
ASPHALT SEAL COAT (2-APPLICATIONS @ 2.4 LB/SY)	2839	112	171	—	—	3122				
ASPHALT SEAL AGGREGATE (2-APPLICATIONS @ 20 LB/SY)	2839	112	171	—	—	3122				
1.25" CL3 ASPH SURF 0.38D PG64-22	—	—	—	121	667	788				
3" CL3 ASPH BASE 1.00D PG64-22	—	—	—	121	667	788				
4" CL3 ASPH BASE 1.00D PG64-22	—	—	166*	—	—	166*				

PAVING SUMMARY

ITEM CODE	ITEM	UNIT	MAINLINE	RAMP 2	RAMP 3	WINGFIELD LANE	ENTRANCES	TOTAL PROJECT
2069	JPC PAVEMENT - 10 INCH	SO YD	9314	213	100	—	290	9917
1	DENSE GRADED AGGREGATE BASE (1) (8)	TON	3428	81	38	—	245	3792
103	ASPHALT SEAL COAT	TON	7.50	0.27	0.41	—	—	8.18
100	ASPHALT SEAL AGGREGATE	TON	56.78	2.24	3.42	—	—	62.44
339	CL3 ASPH SURF 0.38D PG64-22	TON	—	—	—	8.33	45.86	54.19
214	CL3 ASPH BASE 1.00D PG64-22	TON	—	—	36.52	19.97	110.06	166.55

*For Temporary Pavement

PIPE DRAINAGE SUMMARY

SHEET NO.	ITEM CODE	SKREW	COVER HEIGHT	DESIGN PH LEVEL	CULVERT PIPE				CULVERT HDWL		DRAINAGE BOXES				PERF PIPE			REMARKS			
					18" ENTRANCE PIPE	24" CULVERT PIPE	36" CULVERT PIPE	15" STORM SEWER PIPE	18" STORM SEWER PIPE	CLASS 'A' CONCRETE	STEEL REINFORCEMENT	SLOPED BOX OUTLET TYPE 1 - 18 IN	SLOPED BOX OUTLET TYPE 1 - 24 IN	DBI TYPE 14	CONC MED BARR BOX INLET TY 9BI	MODIFIED JUNCTION BOX**	PERFORATED PIPE - 4 IN		NON-PERFORATED PIPE - 4 IN	PERF PIPE HEADWALL TY 1 - 4 IN	
UNIT TO BID					441	464	468	521	522	8100	8150	1433	1434	1577	1621	----	1000	1010	1020		
					LIN FT				CU YD	LB	EACH				LF	LF	EACH				
	Sta. 415+58 Lt.	0°	2.4'	M					30			1			1						
	Sta. 415+58 to 417+00 Lt.		4.2'	M					140						1						
	Sta. 417+00 to 418+50 Lt.		4.2'	M					148						1						
	Sta. 418+50 to 420+30 Lt.		4.2'	M				177							1						
	Sta. 422+10 Lt.	0°	2.6'	M					35			1			1						
	Sta. 422+10 to 423+50 Lt.		3.8'	M					138						1						
	Sta. 423+50 to 425+50 Lt.		3.8'	M				198							1						
	Sta. 429+52 Lt.	6°41'25" Rt	6.8'	M		30			2.15	181.5						1					One 36" S & F Hdw, Modified J.B.
	Sta. 432+60 to 433+30 Lt.		1.0'	M		70							2								
	Sta. 439+85 to 440+15 Lt.		3.5'	M	30							2									
	Sta. 441+05 Lt.	0°	3.8'	M										1							
	Sta. 441+05 to 441+72.50 Lt.		6.2'	M				64													
	Sta. 415+25 to 420+00 Lt.																475				Drain into Proposed Pipe Sta. 415+58
	Sta. 420+00 to 422+65 Lt.																265				Drain into Proposed Pipe Sta. 422+10
	Sta. 423+50 to 425+50 Lt.																130				Drain into Proposed CMBBI - Sta. 423+50
	Sta. 425+50 to 428+60 Lt.																340				Drain into Proposed CMBBI - Sta. 425+50
	Sta. 431+50 to 435+00 Lt.																350	10	1		Outlet to Perf Pipe Headwall Sta. 431+50
	Sta. 436+50 to 440+50 Lt.																400	10	1		Outlet to Perf Pipe Headwall Sta. 440+50
	Sta. 322+09 to 323+48 Lt. (Ramp 3)																140	40			Drain into Existing Drop Box - Ramp 3
	TOTAL PROJECT				30	70	30	439	491	2.15	181.5	4	2	1	7	1	2100	60	2		

NOTES

ALL ASHALT MIXTURES SHALL BE ESTIMATED AT 110 LBS. PER SQ. YD. PER INCH OF DEPTH, UNLESS NOTED OTHERWISE.

① ESTIMATED AT 115 LBS. PER SQ. YD. PER INCH OF DEPTH.

② ESTIMATED AT 100 LBS. PRE SQ. YD. PER INCH OF DEPTH.

③ ESTIMATED AT 95 LBS. PER SQ. YD. PER INCH OF DEPTH.

④ Additional Quantities have been added than what is shown on the traffic control sheet. Signs may be added or removed by the Engineer.

⑤ APPROXIMATELY 3 ACRES.

⑥ DISMANTLE, SALVAGE, AND STOCKPILE AT THE HIGHWAY DEPT. MIDDLETOWN OFFICE AS DIRECTED BY THE ENGINEER. SALVAGED ITEMS SHALL BECOME THE PROPERTY OF THE DEPARTMENT OF HIGHWAYS.

⑦ USED FOR PERFORATED PIPE HEADWALL

⑧ *INCLUDES 10% ADDITIONAL MATERIAL IN THE BOTTOM 4" OF THE PAVEMENT DESIGN AS A CONSTRUCTION TOLERANCE ON ROCK SUBGRADE.

⑨ Hot poured sealant is required.

** See Detail Sheets R11g for Quantities

⑩ INCLUDES 653 SQ. YD REMOVAL OF EXISTING CONCRETE ENTRANCES

SCALE: 1"=N/A

PIPE & PAVING SUMMARY SHEET

FILE NAME: G:\PWORK\PATRICK.MATHENY\0387904\RD0206SU\MUL.DGN
 USER: Patrick Matheny
 DATE PLOTTED: December 7, 2012
 E-SHEET NAME:
 MicroStation v8.11.7.443

PAVING AREAS

ITEM	MAINLINE	RAMP 2	RAMP 3	WINGFIELD LANE	ENTRANCES	TOTAL PROJECT
	S Q U A R E Y A R D S					
JPC PAVEMENT - 10 INCH	9314	213	100	—	290	9917
4" DENSE GRADED AGGREGATE BASE	—	—	—	—	548	548
6" DENSE GRADED AGGREGATE BASE	9314	213	100	—	290	9917
FULL DEPTH DGA BASE (ESTIMATED @ 12" DEPTH)	474	—	—	—	—	474
FULL DEPTH DGA BASE (ESTIMATED @ 16" DEPTH)	1215	58	69	—	—	1342
ASPHALT SEAL COAT (2-APPLICATIONS @ 2.4 LB/SY)	2839	112	171	—	—	3122
ASPHALT SEAL AGGREGATE (2-APPLICATIONS @ 20 LB/SY)	2839	112	171	—	—	3122
1.25" CL3 ASPH SURF 0.38D PG64-22	—	—	—	121	667	788
3" CL3 ASPH BASE 1.00D PG64-22	—	—	—	121	667	788
4" CL3 ASPH BASE 1.00D PG64-22	—	—	166*	—	—	166*

*For Temporary Pavement

PAVING SUMMARY

REVISED 12-7-12

ITEM CODE	ITEM	UNIT	MAINLINE	RAMP 2	RAMP 3	WINGFIELD LANE	ENTRANCES	TOTAL PROJECT
2069	JPC PAVEMENT - 10 INCH	SO YD	9314	213	100	—	290	9917
1	DENSE GRADED AGGREGATE BASE (1) (8)	TON	3428	81	38	—	245	3792
103	ASPHALT SEAL COAT	TON	1.50	0.27	0.41	—	—	8.18
100	ASPHALT SEAL AGGREGATE	TON	56.78	2.24	3.42	—	—	62.44
339	CL3 ASPH SURF 0.38D PG64-22	TON	—	—	—	8.33	45.86	54.19
214	CL3 ASPH BASE 1.00D PG64-22	TON	—	—	36.52	19.97	110.06	166.55

PIPE DRAINAGE SUMMARY

SHEET NO.	SKEW	COVER HEIGHT	DESIGN PH LEVEL	CULVERT PIPE				CULVERT HDWL		DRAINAGE BOXES				PERF PIPE			REMARKS			
				18" ENTRANCE PIPE	24" CULVERT PIPE	36" CULVERT PIPE	15" STORM SEWER PIPE	18" STORM SEWER PIPE	CLASS 'A' CONCRETE	STEEL REINFORCEMENT	SLOPED BOX OUTLET TYPE 1 - 18 IN	SLOPED BOX OUTLET TYPE 1 - 24 IN	DBI TYPE 14	CONC MED BARR BOX INLET TY 9BI	MODIFIED JUNCTION BOX**	PERFORATED PIPE - 4 IN		NON-PERFORATED PIPE - 4 IN	PERF PIPE HEADWALL TY 1 - 4 IN	
ITEM CODE				441	464	468	521	522	8100	8150	1433	1434	1577	1621	---	1000	1010	1020		
UNIT TO BID																				
Sta. 415+58 Lt.	0°	2.4'	M					30			1									
Sta. 415+58 to 417+00 Lt.		4.2'	M					140												
Sta. 417+00 to 418+50 Lt.		4.2'	M					148												
Sta. 418+50 to 420+30 Lt.		4.2'	M				177													
Sta. 422+10 Lt.	0°	2.6'	M					35		1										
Sta. 422+10 to 423+50 Lt.		3.8'	M					138												
Sta. 423+50 to 425+50 Lt.		3.8'	M				198													
Sta. 429+52 Lt.	6°41'25" Rt	6.8'	M			30			2.15	181.5				1						One 36" S & F Hdw, Modified J.B.
Sta. 432+60 to 433+30 Lt.		1.0'	M		70						2									
Sta. 439+85 to 440+15 Lt.		3.5'	M		30						2									
Sta. 441+05 Lt.	0°	3.8'	M																	
Sta. 441+05 to 441+72.50 Lt.		6.2'	M				64					1								
Sta. 415+25 to 420+00 Lt.																475				Drain into Proposed Pipe Sta. 415+58
Sta. 420+00 to 422+65 Lt.																265				Drain into Proposed Pipe Sta. 422+10
Sta. 423+50 to 425+50 Lt.																130				Drain into Proposed CMBBI - Sta. 423+50
Sta. 425+50 to 428+60 Lt.																340				Drain into Proposed CMBBI - Sta. 425+50
Sta. 431+50 to 435+00 Lt.																350	10	1		Outlet to Perf Pipe Headwall Sta. 431+50
Sta. 436+50 to 440+50 Lt.																400	10	1		Outlet to Perf Pipe Headwall Sta. 440+50
Sta. 322+09 to 323+48 Lt. (Ramp 3)																140	40			Drain into Existing Drop Box - Ramp 3
TOTAL PROJECT					30	70	30	439	491	2.15	181.5	4	2	1	7	1	2100	60	2	

NOTES

ALL ASHALT MIXTURES SHALL BE ESTIMATED AT 110 LBS. PER SQ. YD. PER INCH OF DEPTH, UNLESS NOTED OTHERWISE.

(1) ESTIMATED AT 115 LBS. PER SQ. YD. PER INCH OF DEPTH.

(2) ESTIMATED AT 100 LBS. PRE SQ. YD. PER INCH OF DEPTH.

(3) ESTIMATED AT 95 LBS. PER SQ. YD. PER INCH OF DEPTH.

(4) Additional Quantities have been added than what is shown on the traffic control sheet. Signs may be added or removed by the Engineer.

(5) APPROXIMATELY 3 ACRES.

(6) DISMANTLE, SALVAGE, AND STOCKPILE AT THE HIGHWAY DEPT. MIDDLETOWN OFFICE AS DIRECTED BY THE ENGINEER. SALVAGED ITEMS SHALL BECOME THE PROPERTY OF THE DEPARTMENT OF HIGHWAYS.

(7) USED FOR PERFORATED PIPE HEADWALL

(8) *INCLUDES 10% ADDITIONAL MATERIAL IN THE BOTTOM 4" OF THE PAVEMENT DESIGN AS A CONSTRUCTION TOLERANCE ON ROCK SUBGRADE.

(9) Hot poured sealant is required.

** See Detail Sheets R11g for Quantities

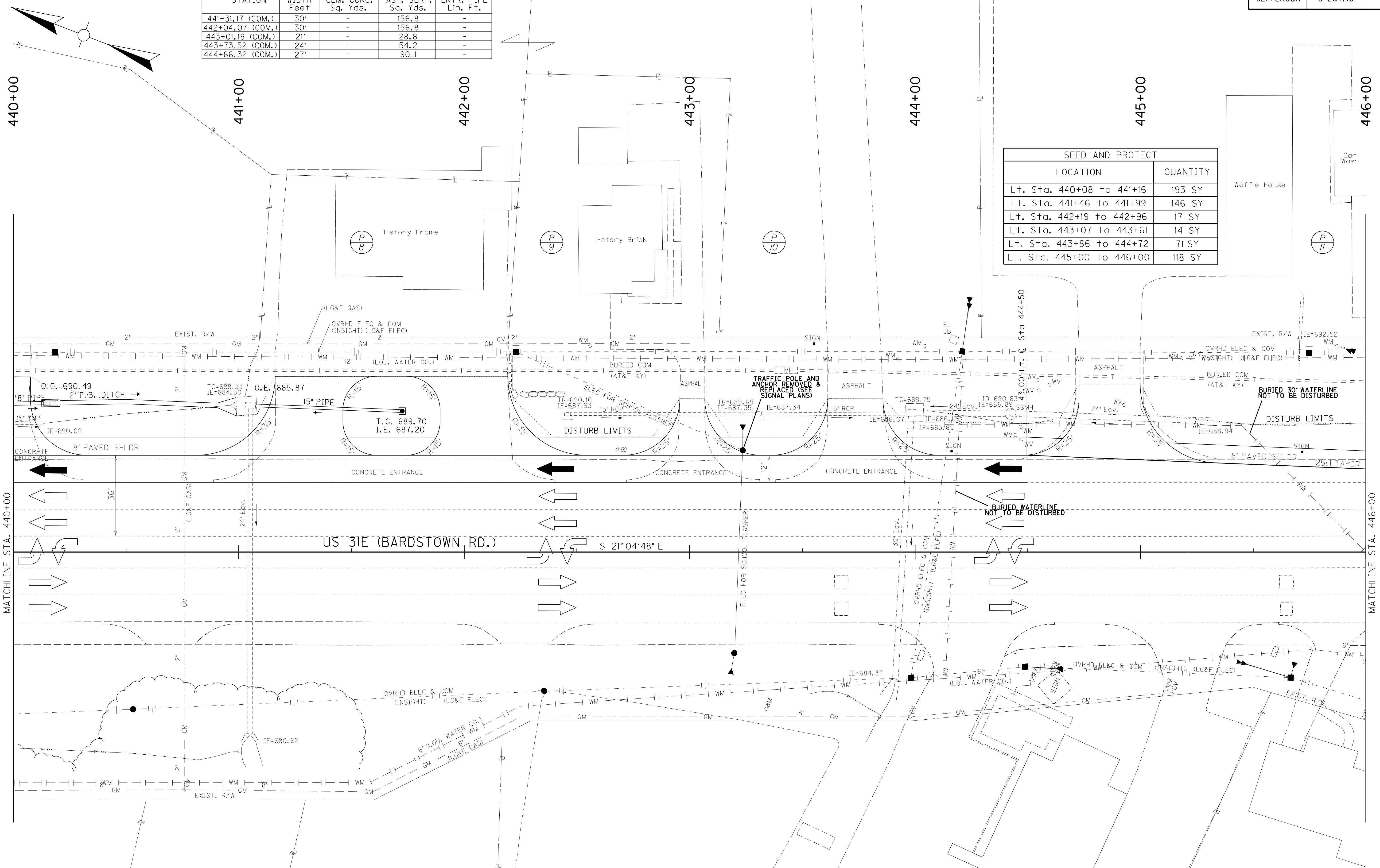
(10) INCLUDES 653 SQ. YD REMOVAL OF EXISTING CONCRETE ENTRANCES

SCALE: 1"=N/A

PIPE & PAVING SUMMARY SHEET

CONSTRUCT ENTRANCE LT.				
STATION	WIDTH Feet	CEM. CONC. Sq. Yds.	ASH. SURF. Sq. Yds.	ENTR. PIPE Lin. Ft.
441+31.17 (COM.)	30'	-	156.8	-
442+04.07 (COM.)	30'	-	156.8	-
443+01.19 (COM.)	21'	-	28.8	-
443+73.52 (COM.)	24'	-	54.2	-
444+86.32 (COM.)	27'	-	90.1	-

SEED AND PROTECT	
LOCATION	QUANTITY
Lt. Sta. 440+08 to 441+16	193 SY
Lt. Sta. 441+46 to 441+99	146 SY
Lt. Sta. 442+19 to 442+96	17 SY
Lt. Sta. 443+07 to 443+61	14 SY
Lt. Sta. 443+86 to 444+72	71 SY
Lt. Sta. 445+00 to 446+00	118 SY



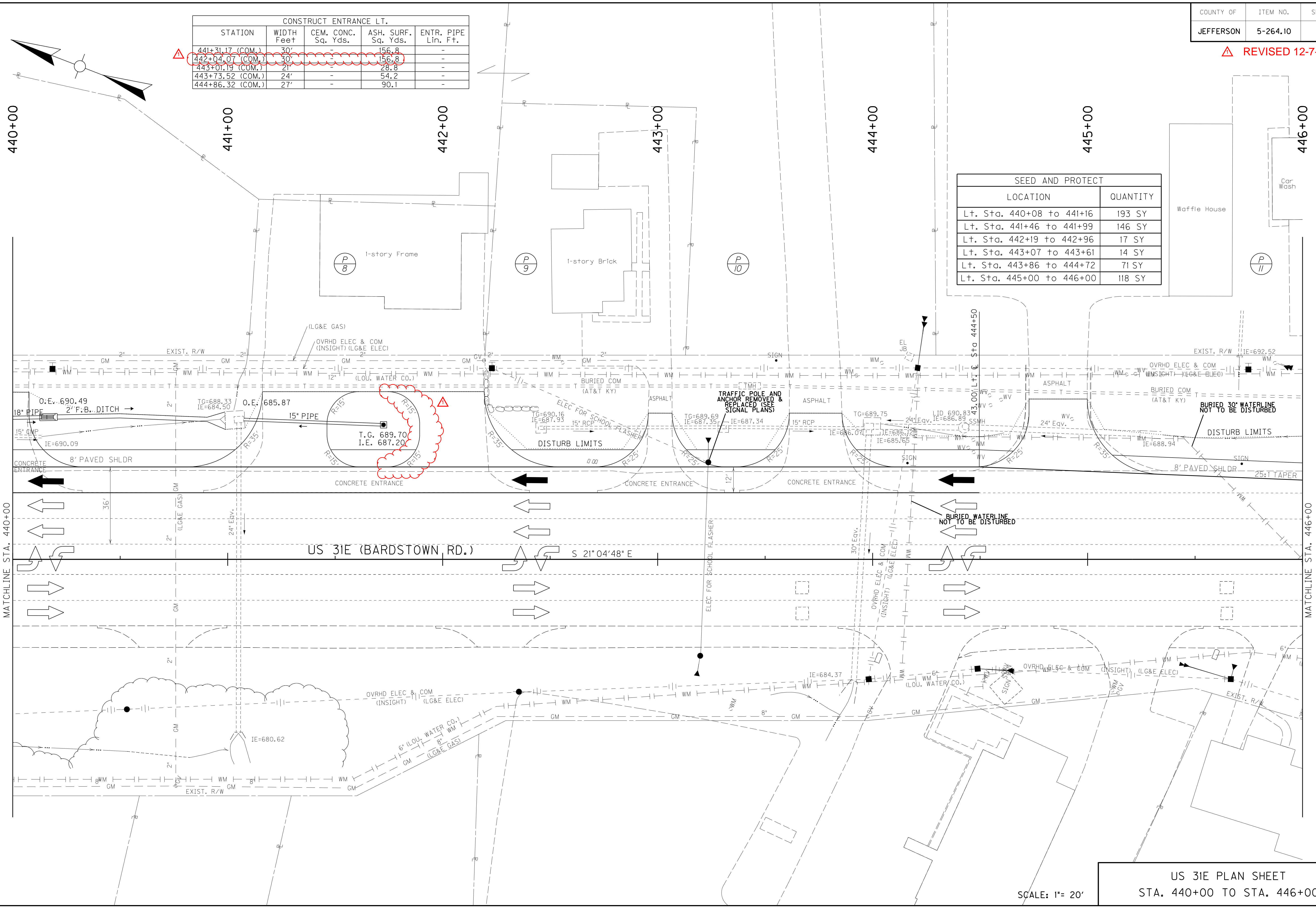
FILE NAME: G:\PWORK\PATRICK.MATHENY\0387904\RD0800PL_MUI.DGN
 USER: Patrick, Matheny
 DATE PLOTTED: December 6, 2012
 E-SHEET NAME:
 MicroStation v8.11.7.443

US 31E PLAN SHEET
 STA. 440+00 TO STA. 446+00
 SCALE: 1"= 20'

REVISI 12-7-12

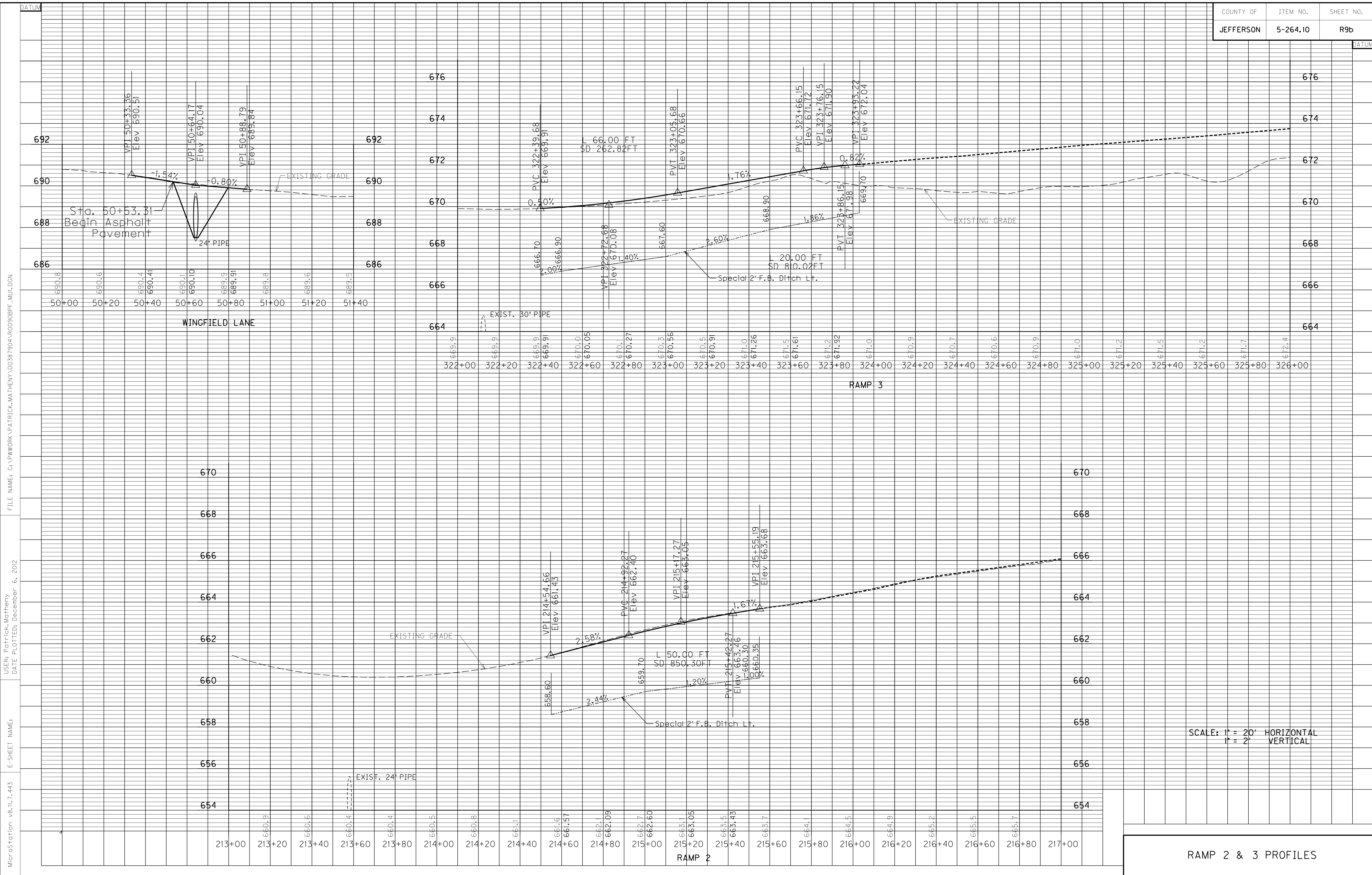
CONSTRUCT ENTRANCE LT.				
STATION	WIDTH Feet	CEM. CONC. Sq. Yds.	ASH. SURF. Sq. Yds.	ENTR. PIPE Lin. Ft.
441+31.17 (COM.)	30'	-	156.8	-
442+04.07 (COM.)	30'	-	156.8	-
443+01.19 (COM.)	21'	-	28.8	-
443+73.52 (COM.)	24'	-	54.2	-
444+86.32 (COM.)	27'	-	90.1	-

SEED AND PROTECT	
LOCATION	QUANTITY
Lt. Sta. 440+08 to 441+16	193 SY
Lt. Sta. 441+46 to 441+99	146 SY
Lt. Sta. 442+19 to 442+96	17 SY
Lt. Sta. 443+07 to 443+61	14 SY
Lt. Sta. 443+86 to 444+72	71 SY
Lt. Sta. 445+00 to 446+00	118 SY



FILE NAME: G:\PWORK\PATRICK.MATHENY\0387904\RD0800PL_MUI.DGN
 USER: Patrick, Matheny
 DATE PLOTTED: December 6, 2012
 E-SHEET NAME:
 MicroStation v8.11.7.443

US 31E PLAN SHEET
 STA. 440+00 TO STA. 446+00
 SCALE: 1" = 20'

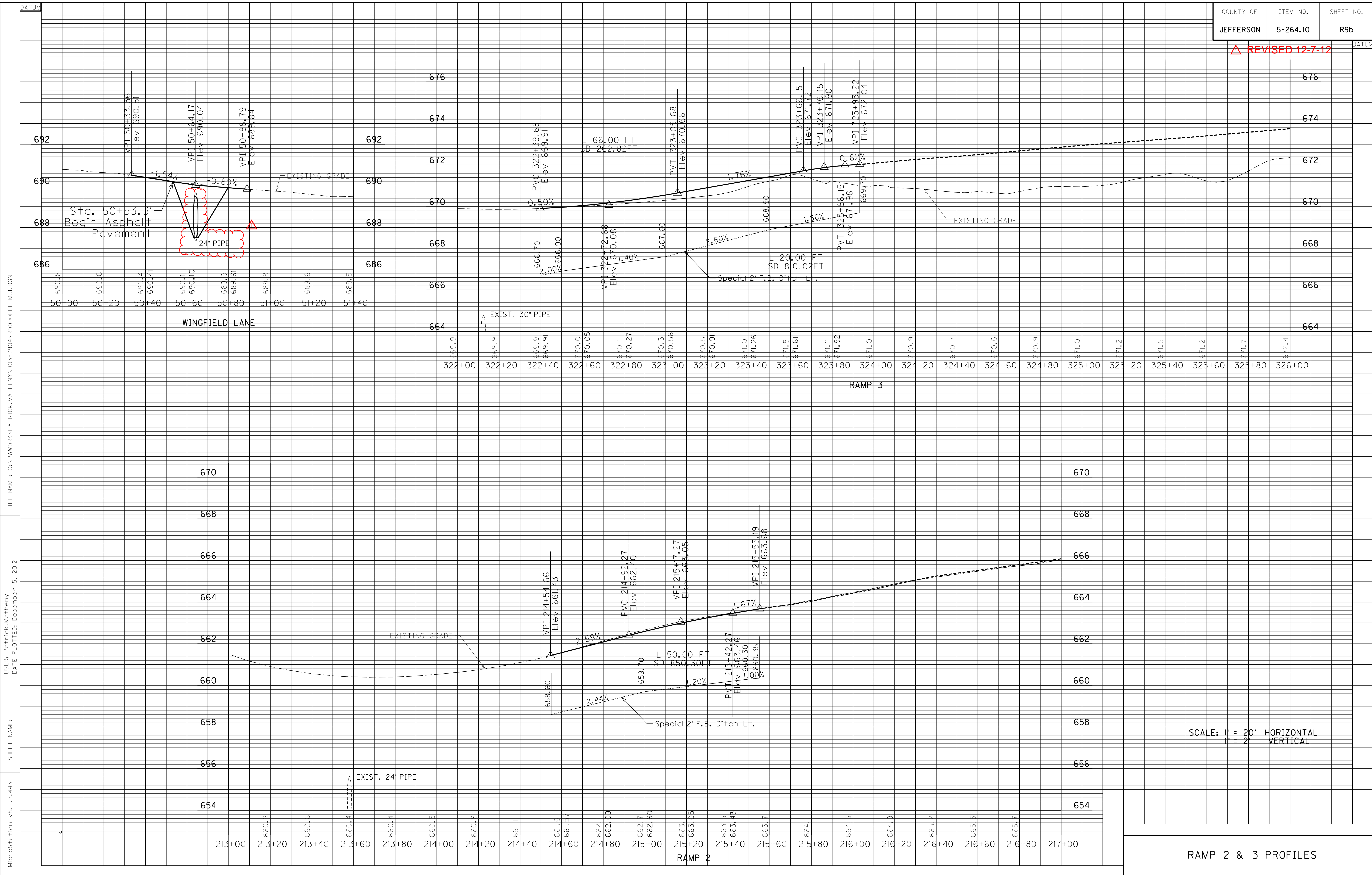


MicroStation v8.11.7.443
 E-SHEET NAME:
 USER: Patrick, Matheny
 DATE PLOTTED: December 6, 2012
 FILE NAME: C:\PWORK\PATRICK.MATHENY\0387904\000908PF_MU.DGN

SCALE: 1" = 20' HORIZONTAL
 1" = 2' VERTICAL

RAMP 2 & 3 PROFILES

△ REVISED 12-7-12



SCALE: 1" = 20' HORIZONTAL
1" = 2' VERTICAL

RAMP 2 & 3 PROFILES

121378

PROPOSAL BID ITEMS

Page 1 of 4

Report Date 12/10/12

Section: 0001 - PAVING

LINE	BID CODE	ALT	DESCRIPTION	QUANTITY	UNIT	UNIT PRICE	FP	AMOUNT
0010	00001		DGA BASE(REVISED: 12-10-12)	3,792.00	TON		\$	
0020	00100		ASPHALT SEAL AGGREGATE	62.44	TON		\$	
0030	00103		ASPHALT SEAL COAT	8.18	TON		\$	
0040	00214		CL3 ASPH BASE 1.00D PG64-22(REVISED: 12-10-12)	166.55	TON		\$	
0050	00339		CL3 ASPH SURF 0.38D PG64-22(REVISED: 12-10-12)	54.19	TON		\$	
0060	02069		JPC PAVEMENT-10 IN(REVISED: 12-10-12)	9,917.00	SQYD		\$	

Section: 0002 - ROADWAY

LINE	BID CODE	ALT	DESCRIPTION	QUANTITY	UNIT	UNIT PRICE	FP	AMOUNT
0080	00078		CRUSHED AGGREGATE SIZE NO 2	2.00	TON		\$	
0090	01984		DELINEATOR FOR BARRIER - WHITE (TEMPORARY)	45.00	EACH		\$	
0100	01984		DELINEATOR FOR BARRIER - WHITE	60.00	EACH		\$	
0110	01985		DELINEATOR FOR BARRIER - YELLOW (TEMPORARY)	45.00	EACH		\$	
0120	01985		DELINEATOR FOR BARRIER - YELLOW	60.00	EACH		\$	
0130	02003		RELOCATE TEMP CONC BARRIER	1,940.00	LF		\$	
0140	02014		BARRICADE-TYPE III	4.00	EACH		\$	
0141	02091		REMOVE PAVEMENT(ADDED: 12-10-12)	2,365.00	SQYD		\$	
0150	02159		TEMP DITCH	800.00	LF		\$	
0160	02200		ROADWAY EXCAVATION(REVISED: 12-10-12)	7,432.00	CUYD		\$	
0170	02262		FENCE-WOVEN WIRE TYPE 1	571.00	LF		\$	
0180	02351		GUARDRAIL-STEEL W BEAM-S FACE	175.00	LF		\$	
0190	02360		GUARDRAIL TERMINAL SECTION NO 1	4.00	EACH		\$	
0200	02367		GUARDRAIL END TREATMENT TYPE 1	2.00	EACH		\$	
0210	02381		REMOVE GUARDRAIL	470.00	LF		\$	
0220	02429		RIGHT-OF-WAY MONUMENT TYPE 1	5.00	EACH		\$	
0230	02432		WITNESS POST	5.00	EACH		\$	
0240	02545		CLEARING AND GRUBBING(3 ACRES)	1.00	LS		\$	
0250	02562		SIGNS	270.00	SQFT		\$	
0251	02599		FABRIC-GEOTEXTILE TYPE IV(ADDED: 12-10-12)	10,417.00	SQYD		\$	
0260	02600		FABRIC GEOTEXTILE TY IV FOR PIPE	1,036.00	SQYD	\$2.00	\$	\$2,072.00
0270	02650		MAINTAIN & CONTROL TRAFFIC	1.00	LS		\$	
0280	02671		PORTABLE CHANGEABLE MESSAGE SIGN	3.00	EACH		\$	
0290	02695		RUMBLE STRIPS TYPE 3	462.00	LF		\$	
0300	02701		TEMP SILT FENCE	3,130.00	LF		\$	
0310	02704		SILT TRAP TYPE B	10.00	EACH		\$	
0320	02705		SILT TRAP TYPE C	3.00	EACH		\$	
0330	02707		CLEAN SILT TRAP TYPE B	30.00	EACH		\$	
0340	02708		CLEAN SILT TRAP TYPE C	9.00	EACH		\$	
0350	02709		CLEAN TEMP SILT FENCE	9,390.00	LF		\$	
0360	02726		STAKING	1.00	LS		\$	
0370	02775		ARROW PANEL	2.00	EACH		\$	

121378

PROPOSAL BID ITEMS

Page 2 of 4

Report Date 12/10/12

LINE	BID CODE	ALT	DESCRIPTION	QUANTITY	UNIT	UNIT PRICE	FP	AMOUNT
0380	02898		RELOCATE CRASH CUSHION	3.00	EACH		\$	
0390	02900		INSTALL TEMP CRASH CUSHION	2.00	EACH		\$	
0400	02998		MASONRY COATING	783.00	SQYD		\$	
0410	03171		CONCRETE BARRIER WALL TYPE 9T	1,120.00	LF		\$	
0420	05950		EROSION CONTROL BLANKET	558.00	SQYD		\$	
0430	05952		TEMP MULCH	3,889.00	SQYD		\$	
0440	05953		TEMP SEEDING AND PROTECTION	15,990.00	SQYD		\$	
0450	05966		TOPDRESSING FERTILIZER	.20	TON		\$	
0460	05985		SEEDING AND PROTECTION	9,400.00	SQYD		\$	
0470	05990		SODDING	2,810.00	SQYD		\$	
0480	06510		PAVE STRIPING-TEMP PAINT-4 IN	10,880.00	LF		\$	
0490	06511		PAVE STRIPING-TEMP PAINT-6 IN	2,760.00	LF		\$	
0500	06514		PAVE STRIPING-PERM PAINT-4 IN	3,180.00	LF		\$	
0510	06515		PAVE STRIPING-PERM PAINT-6 IN	2,608.00	LF		\$	
0520	06516		PAVE STRIPING-PERM PAINT-8 IN	444.00	LF		\$	
0530	06517		PAVE STRIPING-PERM PAINT-12 IN	1,130.00	LF		\$	
0540	06568		PAVE MARKING-THERMO STOP BAR-24IN	24.00	LF		\$	
0550	06589		PAVEMENT MARKER TYPE V-MW	19.00	EACH		\$	
0560	06592		PAVEMENT MARKER TYPE V-B W/R	60.00	EACH		\$	
0570	06593		PAVEMENT MARKER TYPE V-B Y/R	34.00	EACH		\$	
0580	08540		JOINT SEALING	3,296.00	LF		\$	
0590	08904		CRASH CUSHION TY VI CLASS C	1.00	EACH		\$	
0600	10020NS		FUEL ADJUSTMENT	3,910.00	DOLL	\$1.00	\$	\$3,910.00
0610	23131ER701		PIPELINE VIDEO INSPECTION	316.00	LF		\$	
0620	23274EN11F		TURF REINFORCEMENT MAT 1	728.00	SQYD		\$	
0630	23335EC		CONCRETE MEDIAN BARRIER TY 9B2	1,108.00	LF		\$	

Section: 0003 - DRAINAGE

LINE	BID CODE	ALT	DESCRIPTION	QUANTITY	UNIT	UNIT PRICE	FP	AMOUNT
0640	00441		ENTRANCE PIPE-18 IN(REVISED: 12-10-12)	30.00	LF		\$	
0641	00464		CULVERT PIPE-24 IN(ADDED: 12-10-12)	70.00	LF		\$	
0650	00468		CULVERT PIPE-36 IN	30.00	LF		\$	
0660	00521		STORM SEWER PIPE-15 IN	439.00	LF		\$	
0670	00522		STORM SEWER PIPE-18 IN	491.00	LF		\$	
0680	01000		PERFORATED PIPE-4 IN	2,100.00	LF		\$	
0690	01010		NON-PERFORATED PIPE-4 IN	60.00	LF		\$	
0700	01020		PERF PIPE HEADWALL TY 1-4 IN	2.00	EACH		\$	
0710	01433		SLOPED BOX OUTLET TYPE 1-18 IN (REVISED: 12-10-12)	4.00	EACH		\$	
0711	01434		SLOPED BOX OUTLET TYPE 1-24 IN(ADDED: 12-10-12)	2.00	EACH		\$	
0720	01577		DROP BOX INLET TYPE 14	1.00	EACH		\$	
0730	01621		CONC MED BARR BOX INLET TY 9B1	7.00	EACH		\$	
0740	01651		JUNCTION BOX-MOD	1.00	EACH		\$	
0750	08100		CONCRETE-CLASS A	2.15	CUYD		\$	
0760	08150		STEEL REINFORCEMENT	181.50	LB		\$	

121378

PROPOSAL BID ITEMS

Report Date 12/10/12

Section: 0004 - UTILITY

LINE	BID CODE	ALT	DESCRIPTION	QUANTITY	UNIT	UNIT PRICE	FP	AMOUNT
0770	03434		REMOVE FIRE HYDRANT	1.00	EACH		\$	
0780	20329EC		INSTALL FIRE HYDRANT	1.00	EACH		\$	

Section: 0005 - SIGNING

LINE	BID CODE	ALT	DESCRIPTION	QUANTITY	UNIT	UNIT PRICE	FP	AMOUNT
0790	06201		OSS GALV STEEL CANTILEVER MOD	2.00	EACH		\$	
0800	06405		SBM ALUMINUM PANEL SIGNS	866.00	SQFT		\$	
0810	06406		SBM ALUM SHEET SIGNS .080 IN	8.00	SQFT		\$	
0820	06407		SBM ALUM SHEET SIGNS .125 IN	105.00	SQFT		\$	
0830	06411		STEEL POST TYPE 2	155.00	LF		\$	
0840	06450		REM OVERHEAD STRUC CONC BASE	2.00	EACH		\$	
0850	06490		CLASS A CONCRETE FOR SIGNS	74.00	CUYD		\$	
0860	06491		STEEL REINFORCEMENT FOR SIGNS	6,014.00	LB		\$	
0870	20419ND		ROADWAY CROSS SECTION	3.00	EACH		\$	

Section: 0006 - SIGNALIZATION

LINE	BID CODE	ALT	DESCRIPTION	QUANTITY	UNIT	UNIT PRICE	FP	AMOUNT
0880	04795		CONDUIT-2 IN	135.00	LF		\$	
0890	04820		TRENCHING AND BACKFILLING	75.00	LF		\$	
0900	04844		CABLE-NO. 14/5C	1,252.00	LF		\$	
0910	04850		CABLE-NO. 14/1 PAIR	300.00	LF		\$	
0920	04885		MESSENGER-10800 LB	855.00	LF		\$	
0930	04931		INSTALL CONTROLLER TYPE 170	1.00	EACH		\$	
0940	04932		INSTALL STEEL STRAIN POLE	8.00	EACH		\$	
0950	04950		REMOVE SIGNAL EQUIPMENT	3.00	EACH		\$	
0960	20094ES835		TEMP RELOCATION OF SIGNAL HEAD	3.00	EACH		\$	
0970	20188NS835		INSTALL LED SIGNAL-3 SECTION	9.00	EACH		\$	
0980	20408ES835		INSTALL LED BEACON-12 IN	4.00	EACH		\$	
0990	23157EN		TRAFFIC SIGNAL POLE BASE	35.60	CUYD		\$	
1000	24526ED		INSTALL-BEACON CONTROLLER-2 CIRCUIT	2.00	EACH		\$	

121378

PROPOSAL BID ITEMS

Page 4 of 4

Report Date 12/10/12

Section: 0007 - LIGHTING

LINE	BID CODE	ALT	DESCRIPTION	QUANTITY	UNIT	UNIT PRICE	FP	AMOUNT
1010	04700		POLE 30 FT MTG HT	1.00	EACH		\$	
1020	04701		POLE 40 FT MTG HT	5.00	EACH		\$	
1030	04722		BRACKET 8 FT	2.00	EACH		\$	
1040	04723		BRACKET 10 FT	3.00	EACH		\$	
1050	04724		BRACKET 12 FT	1.00	EACH		\$	
1060	04740		POLE BASE	6.00	EACH		\$	
1070	04750		TRANSFORMER BASE	6.00	EACH		\$	
1080	04760		POLE W/SECONDARY CONTROL EQUIP	1.00	EACH		\$	
1090	04770		HPS LUMINAIRE	6.00	EACH		\$	
1100	04780		FUSED CONNECTOR KIT	14.00	EACH		\$	
1110	04794		CONDUIT-1 1/2 IN	150.00	LF		\$	
1120	04795		CONDUIT-2 IN	1,925.00	LF		\$	
1130	04820		TRENCHING AND BACKFILLING	1,730.00	LF		\$	
1140	04835		WIRE-NO. 4	2,490.00	LF		\$	
1150	04836		WIRE-NO. 2	5,700.00	LF		\$	
1160	04940		REMOVE LIGHTING	1.00	LS		\$	
1170	20391NS835		ELECTRICAL JUNCTION BOX TYPE A	7.00	EACH		\$	
1180	20410ED		MAINTAIN LIGHTING	1.00	LS		\$	
1190	21543EN		BORE AND JACK CONDUIT	225.00	LF		\$	
1200	23675EC		WIRE-NO. 12-INSTALL	990.00	LF		\$	
1210	24474ED		WIRE-NO.8-INSTALL	4,875.00	LF		\$	

Section: 0008 - DEMOBILIZATION

LINE	BID CODE	ALT	DESCRIPTION	QUANTITY	UNIT	UNIT PRICE	FP	AMOUNT
1220	02569		DEMOBILIZATION	1.00	LS		\$	